

# MAGIC VAPOR



Bieffe Srl Via Levato 1/1-1/3 61100 Pesaro  
Tel. 0039 0721281857 Fax 0039 0721281880  
www.bieffeitalia.it info@bieffeitalia.it

We have been creating and manufacturing steam generators and ironing boards for more than 20 years.

We apply our knowledge and experience to several fields: sewing, household, catering, cosmetics, etc...

Mr. Farinelli thanks you



*Information, descriptions and illustrations contained in this manual are not binding.  
BIEFFE maintains the right to introduce any necessary change. March 2012*

**MADE IN ITALY.** *The whole BIEFFE production is made in Pesaro.  
Components produced in Italy and recyclable materials are used.*

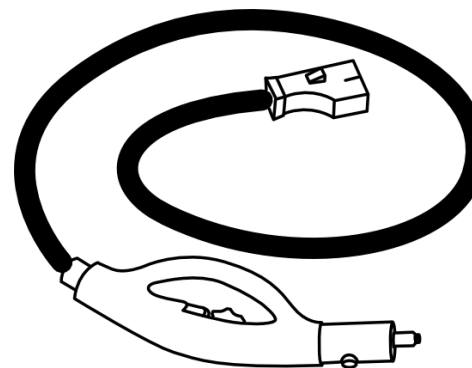
## GENERAL SAFETY INSTRUCTIONS

- ⇒ After the removal of the package make sure of the appliance's integrity. In case of doubt do not operate the appliance but take it to a qualified service person for examination and repair. Plastic bags, polystyrene, etc..., must be kept out of the children's reach.
- ⇒ Before connecting appliance, make sure that data on the plate are the same as the power supply network.
- ⇒ Plug appliance into grounded outlet of sufficient power as provided for by the safety regulations in force.
- ⇒ Do not touch appliance with wet or damp hands.
- ⇒ Always disconnect appliance from electrical outlet when not in use.
- ⇒ This appliance is only and exclusively for its intended use so the manufacturer can not be held responsible for any probable damage due to an illegitimate use.
- ⇒ Never unscrew the safety valve cap during use.
- ⇒ Before cleaning and maintenance make sure that appliance is disconnected from outlet. Do not wash the appliance, do not immerse in water. Before filling the boiler, make sure that appliance is unplugged.
- ⇒ In case of failure or operational defect, turn off appliance, disconnect from electrical outlet. Do not disassemble or attempt to repair the appliance. Incorrect re-assembly or repair could cause a risk of fire, electric shock, or injury to persons when the appliance is used. Any repair must be executed by qualified service persons authorized by the manufacturer. Ask for exclusive use of original spare-parts.
- ⇒ Installation must be executed according to manufacturer's instructions (space for ventilation, room temperature).
- ⇒ Do not operate appliance with damaged cord or hose, but let it made replaced.
- ⇒ Do not remove safety device and protective cover.
- ⇒ Before servicing make sure that appliance is unplugged from electrical outlet.
- ⇒ The non-observance of the above OPERATING AND SAFETY INSTRUCTIONS could prejudice safety.

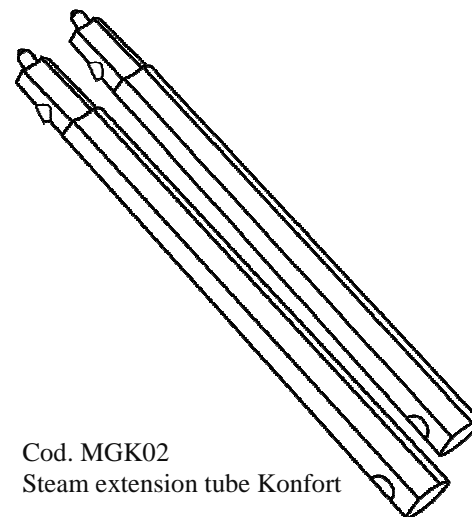
Have a good job

The product complies with the requirements of EC Directive:  
97/23/CE, 2004/108/CE, 2006/42/CE

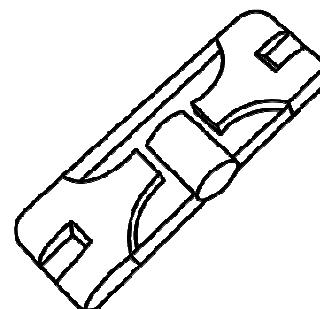
## STANDARD ACCESSORIES



Cod. MGK01  
Steam hose Konfort flex 2mt



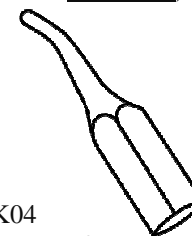
Cod. MGK02  
Steam extension tube Konfort



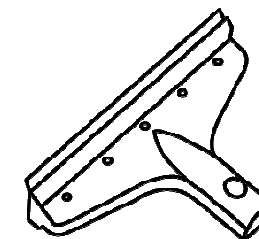
Cod. MGK07  
Steam rectangular brush Konfort



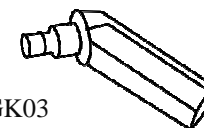
Cod. MGL  
PVC Steam brush d.20 for MGK04  
(upon request, available: STEEL,  
BRONZE AND BRISTLE)



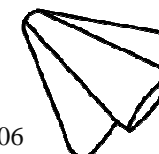
Cod. MGK04  
Steam Lance Konfort



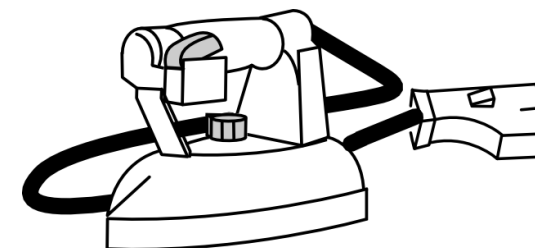
Cod. MGK05  
Steam window cleaner Konfort



Cod. MGK03  
brush-connector Konfort



Cod. MGK06  
Steam triangular brush Konfort



Cod. K1MG  
Steam Iron Magic Vapor

### MAINTENANCE: HOW TO EMPTY THE BOILER

- ⇒ UNSCREW THE SAFETY VALVE CAP HALF A TURN TO RELEASE ALL PRESSURE IN THE BOILER. When the boiler is cold and unpressurized, open the cap and pour out water from the boiler.
- ⇒ It is not necessary to pour out all remaining water any time you finish ironing. It is enough to make this operation once a month.
- ⇒ Be sure to empty the boiler in case of long time of inactivity.
- ⇒ machine and pour out the water from the boiler.
- ⇒ It is not necessary to pour out all remaining water each time you finish cleaning. Do the the emptying/cleaning operations once a month (or more according to the use).

**WHEN FINISHED WORKING, TURN OFF ALL THE SWITCHES, UNPLUG THE APPLIANCE AND KEEP IN A DRY PLACE.**

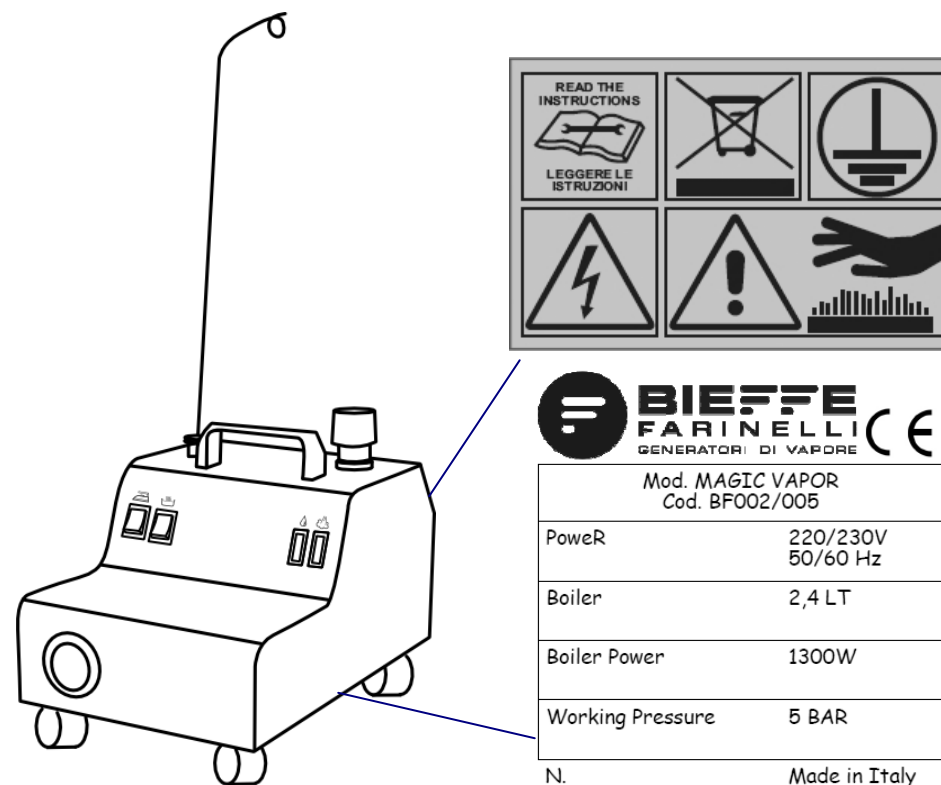
### CONTENTS AND LABELS

N. Pz. 1

Steam generator

N. Pz. 10

Standard accessories (see page 7)



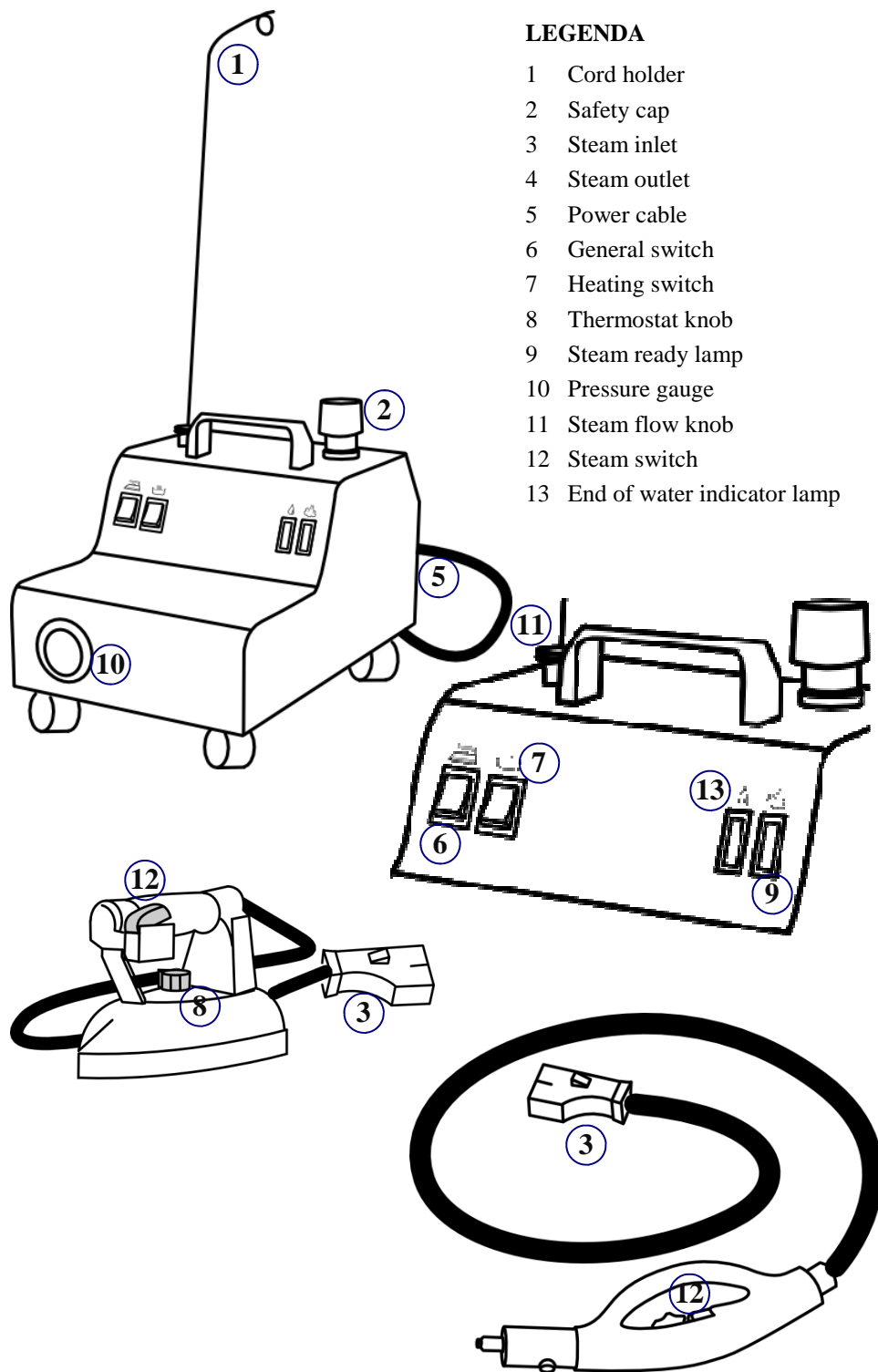
### CAUTION

**DO NOT REMOVE SAFETY DEVICE AND PROTECTIVE COVER BEFORE MAINTENANCE AND SERVICE MAKE SURE THAT APPLIANCE IS UNPLUGGED FROM ELECTRIC OUTLET AND BOILER IS COOL AND NOT UNDER PRESSURE**

### CONSUMER NOTICE:

The BIEFFE product you have purchased is subject to Directive 2002/96/EC of the European Parliament and the Council of the European Union on waste electrical and electronic equipment (WEEE) and, in jurisdictions adopting that Directive, is marked as being put on the market after August 13, 2005, and should not be disposed of as unsorted municipal waste. Please utilize your local WEEE collection facilities in the disposition of this product and otherwise observe all applicable requirements.





#### LEGENDA

- 1 Cord holder
- 2 Safety cap
- 3 Steam inlet
- 4 Steam outlet
- 5 Power cable
- 6 General switch
- 7 Heating switch
- 8 Thermostat knob
- 9 Steam ready lamp
- 10 Pressure gauge
- 11 Steam flow knob
- 12 Steam switch
- 13 End of water indicator lamp

#### SETTING UP: HOW TO FILL (AND REFILL) THE BOILER

- ⇒ Before starting to iron, check the water level in the boiler. In case you need to fill the boiler, make sure the appliance is unplugged.
- ⇒ **UNSCREW THE SAFETY VALVE CAP 2 HALF A TURN TO RELEASE ALL PRESSURE IN THE BOILER.** When there is no pressure left and boiler is cool, remove the safety valve cap by turning it counterclockwise, slowly.
- ⇒ Pour tap water into the boiler using a funnel. 2 liters of water enable you to iron for 3 hours. It is advisable to add less water if you do not have much to iron: the boiler will take shorter to get to pressure, saving energy.
- ⇒ Make sure you do not spill water over the boiler while adding water.
- ⇒ **DO NOT OVERTIGHTEN THE SAFETY VALVE CAP.**
- ⇒ Connect the steam inlet 3 of the steam gun or iron to the the steam outlet 4 behind the appliance.

#### OPERATING INSTRUCTIONS

- ⇒ Plug the boiler into grounded outlet of sufficient power.
- ⇒ Turn on iron switch 6 and boiler switch 7. For dry ironing turn on only switch 7.
- ⇒ In the iron set the thermostat knob 8 to desired temperature. With high temperatures you run the risk of burning the garment or obtaining an undesired shine effect on the fabric. The use of anti-shine Teflon shoe will eliminate this problem.
- ⇒ After about 10 minutes, when the steam ready indicator lamp 6 lights up, or the pressure gauge 10 reads more than 2 bars, you are ready to work. This light will go on and off, depending on the pressure inside the boiler.
- ⇒ **NEVER UNSCREW THE SAFETY VALVE CAP WHEN THE BOILER IS UNDER PRESSURE.**
- ⇒ To get steam press the red thumb switch on the steam gun/iron 12. The black knob 11 enables you to regulate the flow of steam. The first time you press, point the iron away from the garment, in a safe direction and press the red thumb switch to eliminate any condensate from the iron. If while ironing water continues to escape from the iron, that is due to the low temperature of the iron: set the thermostat knob to a higher temperature.
- ⇒ If during ironing you get little steam, or end water indicator 13 lights up, water must be added. Before making this operation, read the instructions on how to refill the boiler very carefully.
- ⇒ When finished ironing, turn off all switches and unplug the boiler.
- ⇒ It is not necessary to pour out all remaining water any time you finish ironing. It is enough to make this operation once a month.