

ECOWASH

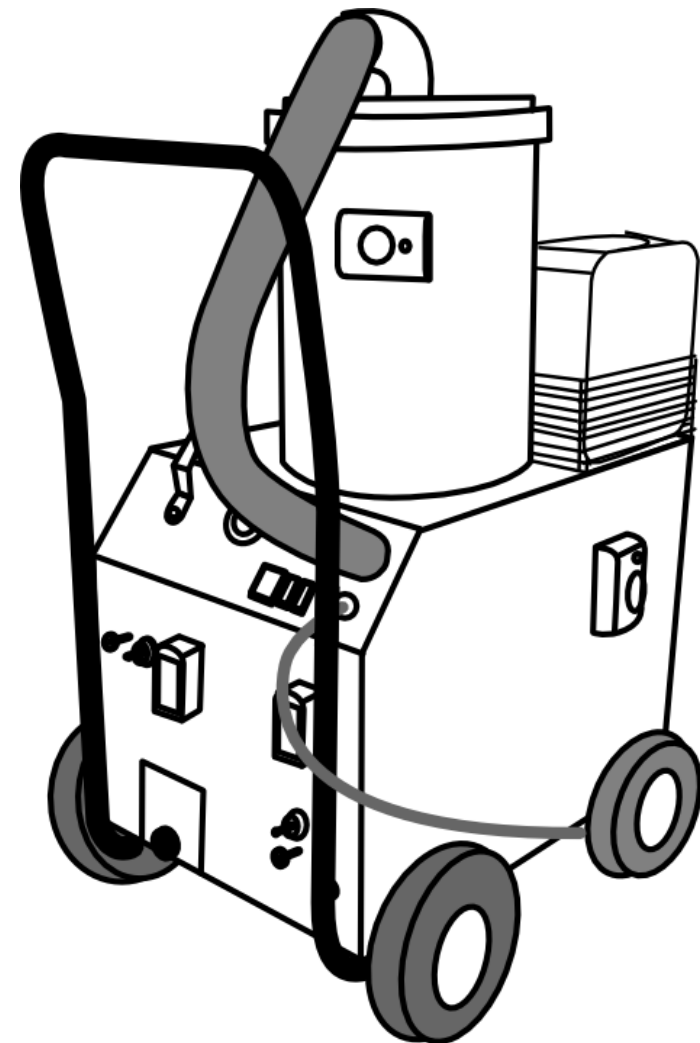


Bieffe Srl Via Costa Fagnano, 3 61122 Pesaro
Tel. 0039 0721281857 Fax 0039 0721281880
www.bieffeitalia.it info@bieffeitalia.it

We have been creating and manufacturing steam generators and ironing boards for more than 20 years.

We apply our knowledge and experience to several fields: sewing, household, catering, cosmetics, etc...

Mr. Farinelli thanks you



*Information, descriptions and illustrations contained in this manual are not binding.
BIEFFE maintains the right to introduce any necessary change. April 2013*

MADE IN ITALY: BIEFFE Company manufactures the whole range of its products in Pesaro using components made in Italy as well as entirely recyclable materials.

OPERATING AND SAFETY INSTRUCTIONS

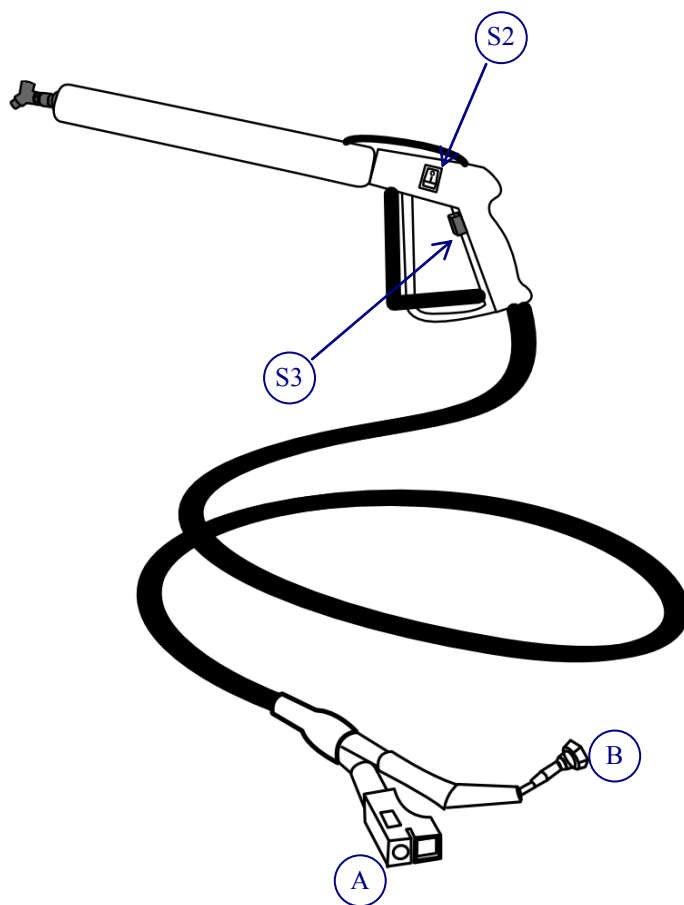
- After the removal of the package make sure of the appliance's integrity. In case of doubt do not operate the appliance but take it to a qualified service person for examination and repair. Plastic bags, polystyrene, etc..., must be kept out of the children's reach.
- Before connecting appliance, make sure that data on the plate are the same as the power supply network. The voltage appliance is of 380V triphases 4P+T.
- Plug appliance into grounded outlet of sufficient power as provided for by the safety regulations in force.
- Do not touch appliance with wet or damp hands.
- Always disconnect appliance from electrical outlet when not in use.
- This appliance is only and exclusively for its intended use so the manufacturer can not be held responsible for any probable damage due to an illegitimate use.
- Never unscrew the safety valve cap during use.
- Before cleaning and maintenance make sure that appliance is disconnected from outlet. Do not wash the appliance, do not immerse in water. Before filling the boiler, make sure that appliance is unplugged.
- In case of failure or operational defect, turn off appliance, disconnect from electrical outlet. Do not disassemble or attempt to repair the appliance. Incorrect re-assembly or repair could cause a risk of fire, electric shock, or injury to persons when the appliance is used. Any repair must be executed by qualified service persons authorized by the manufacturer. Ask for exclusive use of original spare-parts.
- Installation must be executed according to manufacturer's instructions (space for ventilation, room temperature).
- Do not operate appliance with damaged cord or hose, but let it made replaced.
- Turn off the two boiler switches, and unplug the boiler when finished operating. It is not necessary to empty the boiler of remaining water. it is important to unscrew for only 1 turn the safety cap to let the boiler depressurize.
- Do not remove safety device and protective cover.
- Do not service while appliance operates.
- Before servicing make sure that appliance is unplugged from electrical outlet.
- THE NON-OBSERVANCE OF THE ABOVE OPERATING AND SAFETY INSTRUCTIONS COULD PREJUDICE SAFETY.

Have a good job.

This appliance complies with the CE directive 89/392

INSTRUCTIONS: INJECTION WITH ECOWASH GUN (OPTIONAL)

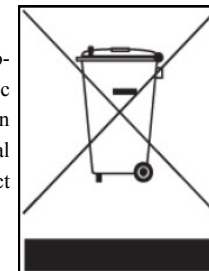
- Connect the injection/extraction Ecowash brush to the machine. Insert the steam inlet (A) to the steam outlet (35). Insert the water inlet (B) to the cold water outlet (38).
- To get water turn on switch (S2).
- To get steam turn on switch (S3).

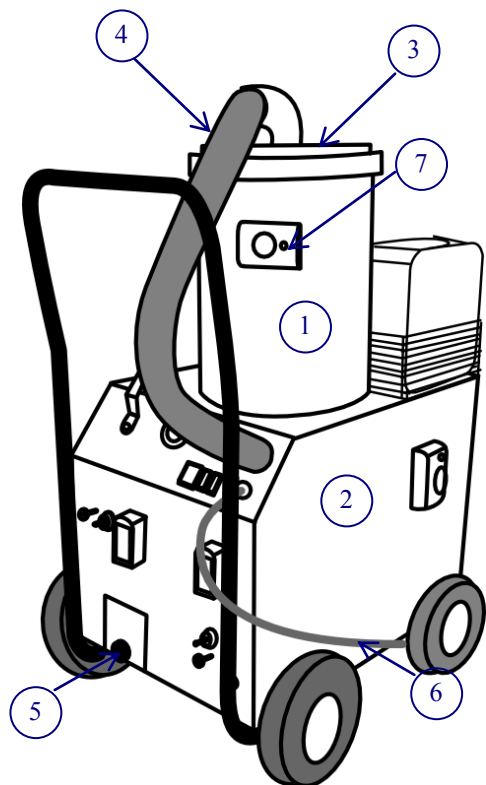


CAUTION
DO NOT REMOVE SAFETY DEVICE AND PROTECTIVE COVER
BEFORE MAINTENANCE AND SERVICE MAKE SURE THAT APPLIANCE IS
UNPLUGGED FROM ELECTRIC OUTLET AND BOILER IS COOL AND NOT
UNDER PRESSURE

CONSUMER NOTICE:

The BIEFFE product you have purchased is subject to Directive 2002/96/EC of the European Parliament and the Council of the European Union on waste electrical and electronic equipment (WEEE) and, in jurisdictions adopting that Directive, is marked as being put on the market after August 13, 2005, and should not be disposed of as unsorted municipal waste. Please utilize your local WEEE collection facilities in the disposition of this product and otherwise observe all applicable requirements.



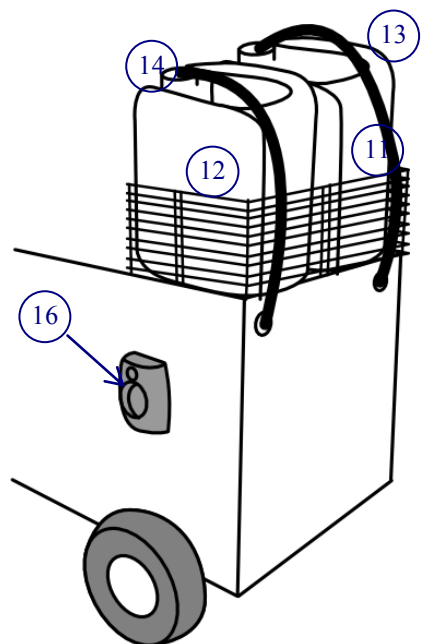


LEGENDA

- 1 Exhauster drum
- 2 Steam generator
- 3 Cover floatholder
- 4 Vacuum hose
- 5 Draining tap
- 6 Power cord
- 7 Vacuum outlet

- 11 10LT tank for only water
- 12 10LT tank for detergent
- 13 Water boiler recharge hose
- 14 Water/detergent recharge hoses
- 15
- 16 Exhauster air outlet
- 21 Power switch
- 22 Pressure gauge
- 23 Steam/water lever for n°33 outlet
- 24 Water pump switch
- 25 Steam ready lamp
- 26 Heating element lamp

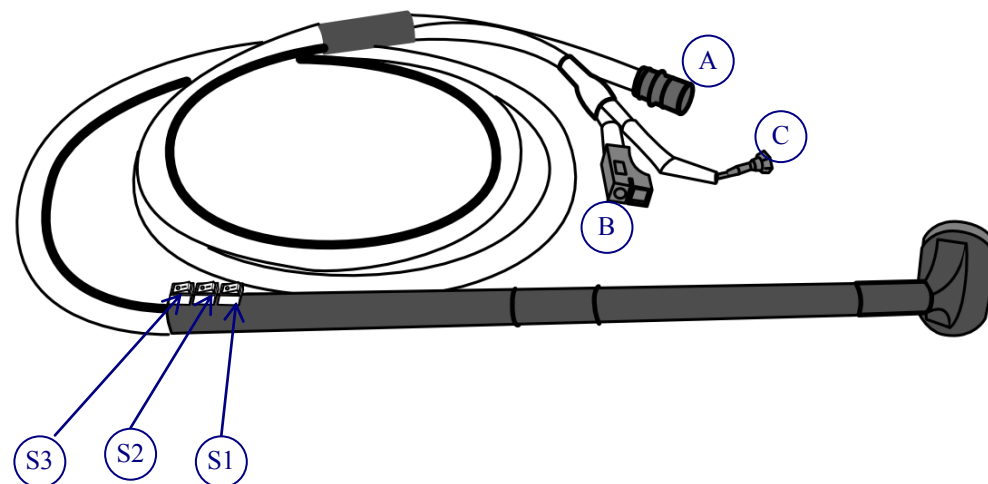
- 31 Steam outlet
- 32 Steam regulator knob
- 33 Steam and water outlet
- 34
- 35 Steam outlet
- 36
- 37
- 38 Water regulator knob
- 39 Water regulator knob
- 40
- 41



INSTRUCTIONS: INJECTION/EXTRACTION WITH ECOWASH BRUSH

- Connect the injection/extraction Ecowash brush to the machine. Insert the vacuum inlet (A) to the vacuum outlet (7). Insert the steam inlet (B) to the steam outlet (34). Insert the water inlet (C) to the hot water outlet (36).
- To get steam turn on switch (S1).
- To vacuum turn on switch (S2).
- To get water turn on switch (S3).
- For a good job you should loosen the dirt with steam and hot water. Then suck the debris. All the dirt will go into the steel drum.

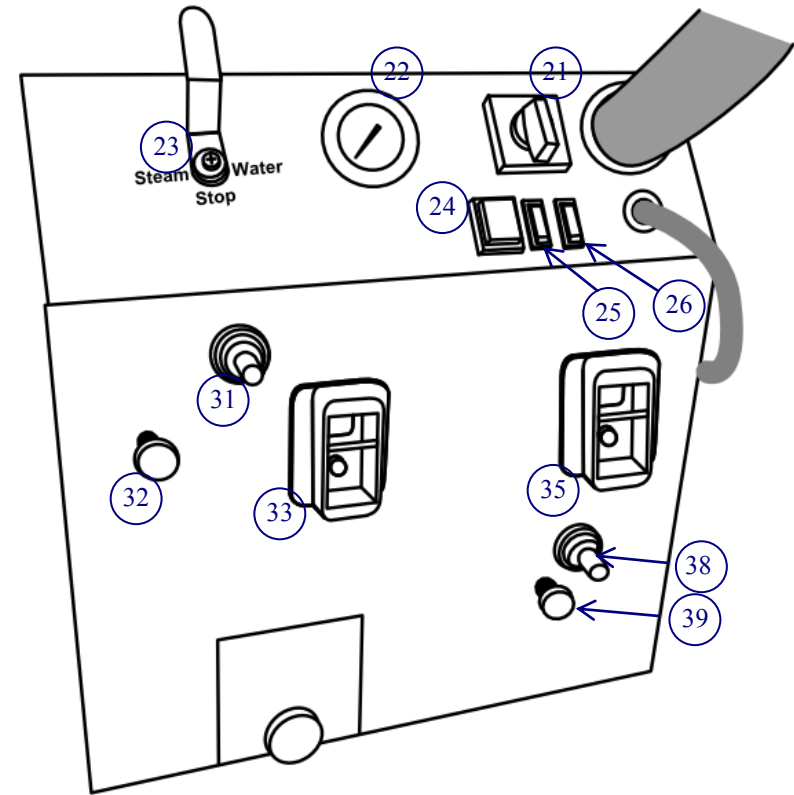
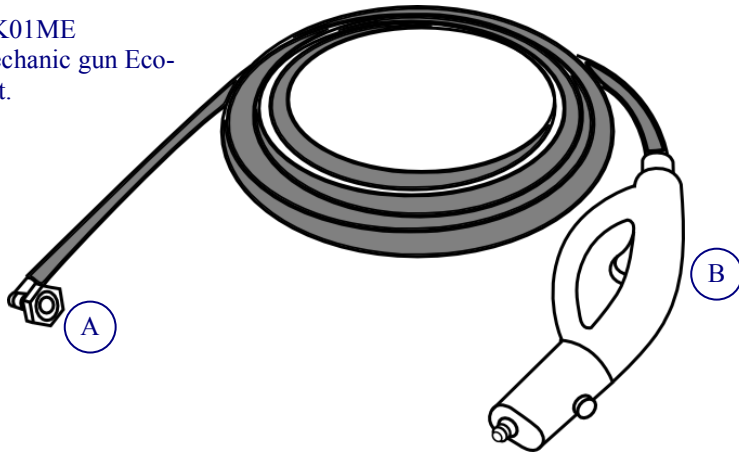
ECOWASH SILICON BRUSH (STEAM+WATER+VACCUM)



INSTRUCTIONS: INJECTION WITH STEAM GUN COD.MGK01ME

- Connect the Steam Gun cod.MGK01ME to the machine.
Insert the steam inlet (A) to the steam outlet (31).
- To get steam press the button (B) on the gun.

Cod.MGK01ME
Steam mechanic gun Eco-
wash 5 mt.



SETTING UP

- Place the exhauster steel drum (1) in its housing on the steam generator (2). Close the steel drum with the cover floatholder (3), lock the cover with the two hooks.
- Insert the vacuum hose (4) into the cover (3).
- Be sure the draining tap (5) is closed. Fill in the tanks (11) with water **WARNING: DO NOT USE DISTILLED WATER.** The WATER SENSORS DO NOT WORK with water free of minerals.
- Fill in the detergent tank (12) with water (or non foamy detergent). Make sure that the charging hoses are in their tanks in contact with water (13) and (14).
- Before plugging into ground outlet make sure that the draining tap (5) is closed, the steam/water lever (23) is in position "Stop" and the switch (24) is off. The power switch (21) must be set on "0".
- Connect the power cord (6) to an electrical outlet.
- Turn the power switch (21) to position "1". If the boiler is empty a pump starts to load the boiler with water from the tank (11).
- Wait until the steam ready lamp (25) is active and/or the pressure gauge (22) reaches 7 ATM. to start working.
- When the boiler is going to be empty, the pump re-charges the boiler with water from the tank (11). When a tank is empty, a sound alarm is activated. During the alarm the machine stops working. To continue working, do not switch off the machine, fill in the empty tank and remember to insert its loading hose.

INSTRUCTIONS: INJECTION/EXTRACTION WITH PRATIKA COD.RIP0101

- Connect the injection/extraction Pratika handle cod.CVK21 to the machine. Insert the vacuum inlet (A) to the vacuum outlet (7). Insert the steam/water inlet (B) to the steam/water outlet (33).
- To get steam with the Pratika Handle turn the lever (23) left to the "steam" position and press the lever (C).
- To dispense hot water with the tube Pratika turn the lever (23) right to the "water", turn on the switch (24) on the control panel and press the lever (C).
- On Pratika handle press the switch (D) to operate the exhauster.
- For a good job you should loosen the dirt with steam and hot water. Then suck the debris. All the dirt will go into the steel drum.

